

# Snelheidsregel Smoor Flow Stroomregel ventielen Cartridge uitvoering

**Robucon** b.v.

Berrie 2

1724 BB Oudkarspel

Telefoon: 0226-313496


[www.robucon.nl](http://www.robucon.nl)

[mail@robucon.nl](mailto:mail@robucon.nl)

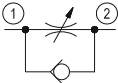


## Mechanical - Flow control

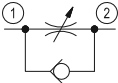
### Cartridge restrictors

Symbol	Type	Max. Pressure bar (psi)	Max. Flow l/min. (gpm)	Cavity	Data Sheet	Page
	ST-C-06	350 (5000)	40 (11)	CA-08A-2N	18321-26	237
	ST-C-10	350 (5000)	70 (19)	CA-10A-2N	18321-27	239
	ST-C-12	350 (5000)	150 (39)	CA-12A-2N	18321-28	241
	ST-C-16	350 (5000)	150 (39)	CA-16A-2N	18321-29	243

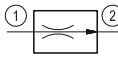
### Needle restrictors free reverse flow

Symbol	Type	Max. Pressure bar (psi)	Max. Flow l/min. (gpm)	Cavity	Data Sheet	Page
	STVU-08A	350 (5000)	40 (11)	CA-08A-2N	18321-10	245
	STVU-10A	350 (5000)	80 (22)	CA-10A-2N	18321-11	247

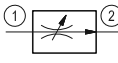
### Needle restrictors free reverse flow fine adjustment

Symbol	Type	Max. Pressure bar (psi)	Max. Flow l/min. (gpm)	Cavity	Data Sheet	Page
	STFU-08A	350 (5000)	40 (11)	CA-08A-2N	18321-09	249

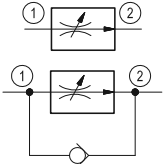
### 2-way pressure compensated fixed setting

Symbol	Type	Max. Pressure bar (psi)	Max. Flow l/min. (gpm)	Cavity	Data Sheet	Page
	VRFA-08A	up to 210 (3000)	8 (2)	CA-08A-2N	18321-12	251
	VRFA-10A-TF	up to 350 (5000)	19 (5)	CA-10A-2N	18321-13	253
	VRFA-12A-TF	up to 350 (5000)	63 (17)	CA-12A-2N	18321-14	259
	MH2FR	420 (6000)	1.2 (0.3)	Special	18351	929

### 2-way pressure compensated partially adjustable

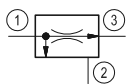
Symbol	Type	Max. Pressure bar (psi)	Max. Flow l/min. (gpm)	Cavity	Data Sheet	Page
	VRFA-10A	up to 350 (5000)	26 (7)	CA-10A-2N	18321-15	255

### 2-way pressure compensated fully adjustable

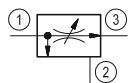
Symbol	Type	Max. Pressure bar (psi)	Max. Flow l/min. (gpm)	Cavity	Data Sheet	Page
	VRFB-10A	up to 350 (5000)	30 (8)	CA-10A-2N	18321-16	257
	VRFE-12A	up to 350 (5000)	50 (13)	CA-12A-2N	18321-30	261

## Mechanical - Flow control

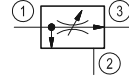
### 3-way pressure compensated fixed setting

Symbol	Type	Max. Pressure bar (psi)	Max. Flow l/min. (gpm)	Cavity	Data Sheet	Page
	VRFC-10A-TF	up to 350 (5000)	19 (5)	CA-10A-3N	18321-18	263
	VRFC-12A-TF	up to 350 (5000)	63 (17)	CA-12A-3N	18321-19	269

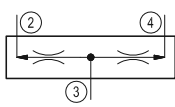
### 3-way pressure compensated partially adjustable

Symbol	Type	Max. Pressure bar (psi)	Max. Flow l/min. (gpm)	Cavity	Data Sheet	Page
	VRFC-10A	up to 350 (5000)	60 (16)	CA-10A-3N	18321-17	265

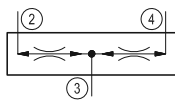
### 3-way pressure compensated fully adjustable

Symbol	Type	Max. Pressure bar (psi)	Max. Flow l/min. (gpm)	Cavity	Data Sheet	Page
	VRFD-10A	up to 350 (5000)	60 (16)	CA-10A-3N	18321-20	267
	VRFD-12A	up to 350 (5000)	120 (32)	CA-12A-3N	18321-21	271

### Flow divider

Symbol	Type	Max. Pressure bar (psi)	Max. Flow l/min. (gpm)	Cavity	Data Sheet	Page
	DSDN-10A	up to 350 (5000)	54 (14)	CA-10A-4N	18321-22	273
	DSDN-16A	up to 350 (5000)	165 (44)	CA-16A-4N	18321-23	275

### Flow divider and combiner

Symbol	Type	Max. Pressure bar (psi)	Max. Flow l/min. (gpm)	Cavity	Data Sheet	Page
	DRFN-10A	up to 350 (5000)	54 (14)	CA-10A-4N	18321-24	277
	DRFN-16A	up to 350 (5000)	165 (44)	CA-16A-4N	18321-25	279

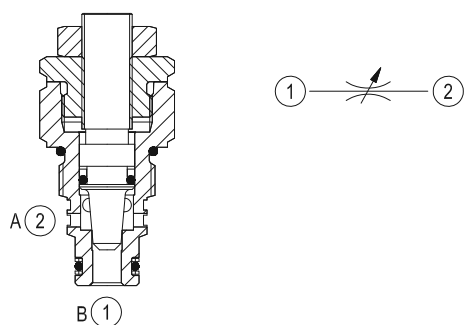
RE 18321-26/01.11 1/2  
Replaces: RE 18321-26/01.10

## Flow control valve, cartridge restrictor

Common cavity, Size 08

ST-C-06

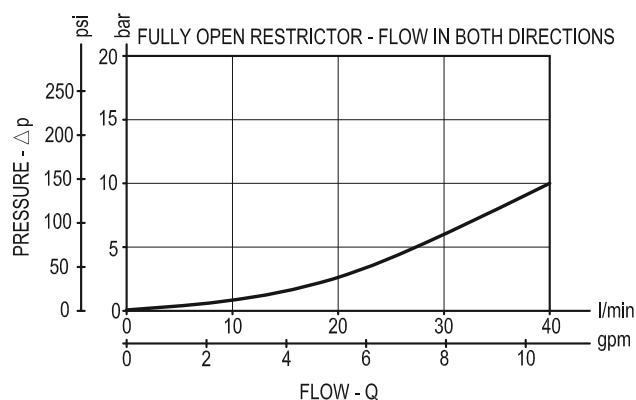
OD.21.01 - X - 56



### Description

Increasing the orifice value from fully closed to fully open, flow is permitted and regulated bi-directional from 1 to 2 and from 2 to 1.

### Performance

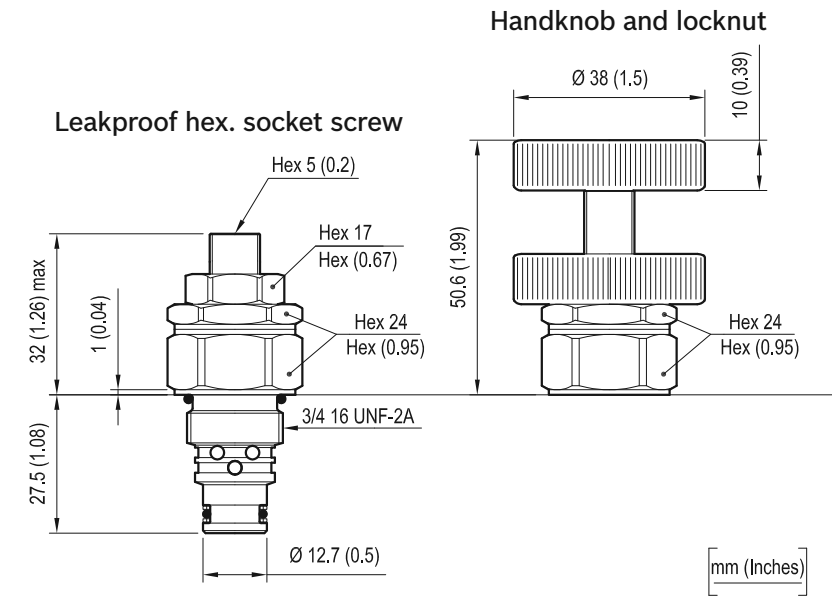


### Technical data

Max. operating pressure	bar (psi)	350 (5000)
Rated flow	l/min. (gpm)	40 (11)
Fluid temperature range	°C (°F)	-30 to 100 (-22 to 212)
Installation torque	Nm (ft-lbs)	39-51 (29-38)
Weight	kg (lbs)	0.09 (0.2)
Cavity		CA-08A-2N see data sheet RE 18325-70
Seal kit (*)	code material no.	RG08A2010530100 R901101544
Fluids		Mineral-based or synthetics with lubricating properties at viscosities of 10 to 500 mm <sup>2</sup> /s (cSt)
Filtration		Nominal value max. 10µm (NAS 8) ISO 4406 19/17/14
Installation		No restrictions
Other Technical Data		See data sheet RE 18350-50

(\*) Only external seals for 10 valves

Dimensions



Ordering code

OD.21.01			X	56	Common cavity, Size 08
Flow control valve, cartridge restrictor					
Adjustments					
= 03 Leakproof hex. socket screw					
= 04 Handknob and locknut					

Type	Material number
OD21010356	R901109366
OD21010456	R901109367

Type	Material number

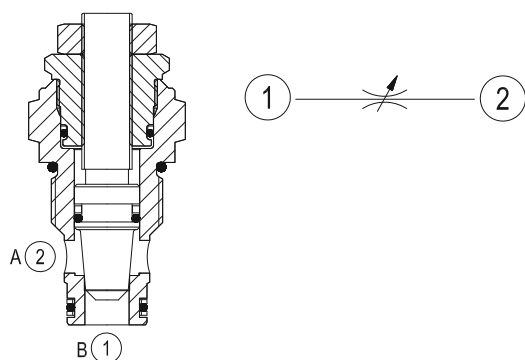
RE 18321-27/02.11 1/2  
Replaces: RE 18321-27/01.10

## Flow control valve, cartridge restrictor

Common cavity, Size 10

ST-C-10

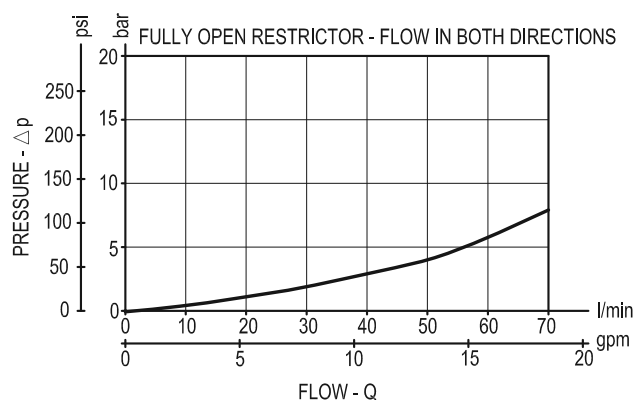
OD.21.01 - X - 36



### Description

Increasing the orifice value from fully closed to fully open, flow is permitted and regulated bi-directional from 1 to 2 and from 2 to 1.

### Performance

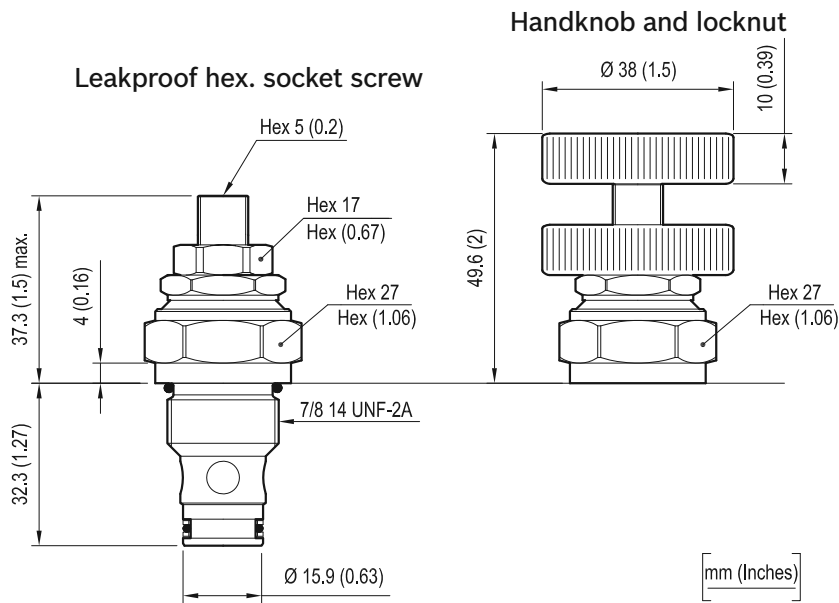


### Technical data

Max. operating pressure	bar (psi)	350 (5000)
Rated flow	l/min. (gpm)	70 (19)
Fluid temperature range	°C (°F)	-30 to 100 (-22 to 212)
Installation torque	Nm (ft-lbs)	44-56 (33-41)
Weight	kg (lbs)	0.18 (0.4)
Cavity		CA-10A-2N see data sheet RE 18325-70
Seal kit (*)	code material no.	RG10A2010530100 R901111366
Fluids		Mineral-based or synthetics with lubricating properties at viscosities of 10 to 500 mm <sup>2</sup> /s (cSt)
Filtration		Nominal value max. 10µm (NAS 8) ISO 4406 19/17/14
Installation		No restrictions
Other Technical Data		See data sheet RE 18350-50

(\*) Only external seals for 10 valves

Dimensions



Ordering code

OD.21.01					X	36	00	*
Flow control valve,cartridge restrictor		Adjustments		Series 0/A to L unchanged performances and dimensions				
				Version and options standard				

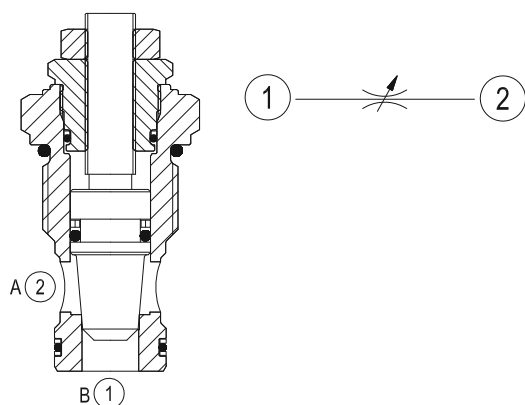
RE 18321-28/01.11 1/2  
Replaces: RE 00162-02/01.06

## Flow control valve, cartridge restrictor

Common cavity, Size 12

ST-C-12

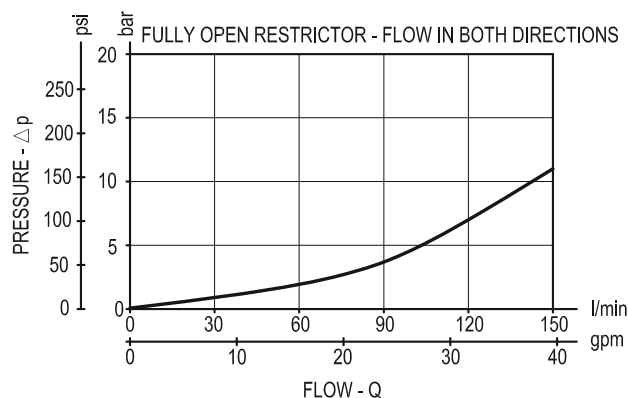
OD.21.01 - X - 89



### Description

Increasing the orifice value from fully closed to fully open, flow is permitted and regulated bi-directional from 1 to 2 and from 2 to 1.

### Performance



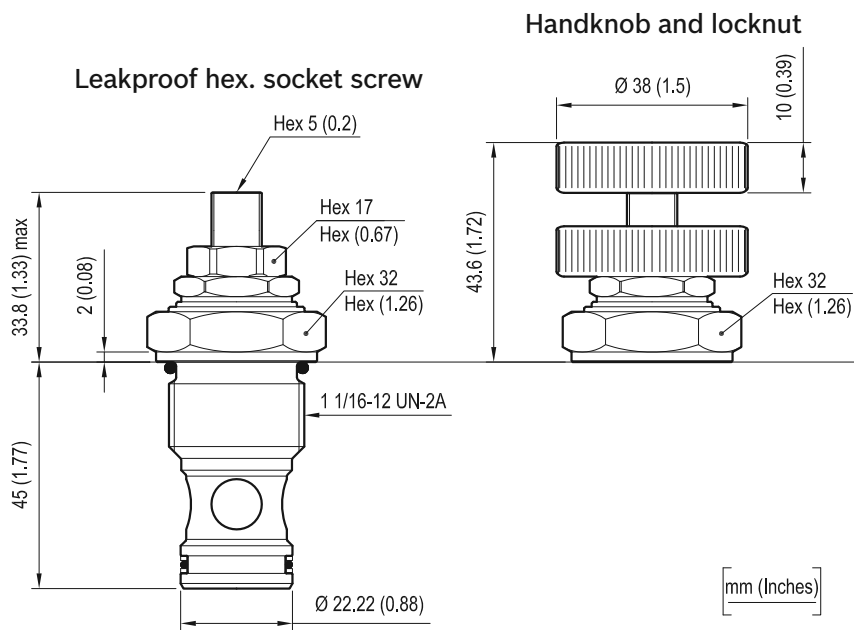
### Technical data

Max. operating pressure	bar (psi)	350 (5000)
Rated flow	l/min. (gpm)	150 (39)
Fluid temperature range	°C (°F)	-30 to 100 (-22 to 212)
Installation torque	Nm (ft-lbs)	54-66 (40-49)
Weight	kg (lbs)	0.31 (0.68)
Cavity		CA-12A-2N see data sheet RE 18325-70
Seal kit (*)	code material no.	RG12A2010530100 R930003374
Fluids		Mineral-based or synthetics with lubricating properties at viscosities of 10 to 500 mm <sup>2</sup> /s (cSt)
Filtration		Nominal value max. 10µm (NAS 8) ISO 4406 19/17/14
Installation		No restrictions
Other Technical Data		See data sheet RE 18350-50

(\*) Only external seals for 10 valves



Dimensions



Ordering code

OD.21.01		X	89	00	*
Flow control valve, cartridge restrictor					Series 0/A to L unchanged performances and dimensions
					Version and options standard
Adjustments					
= 03 Leakproof hex. socket screw					
= 04 Handknob and locknut					
		Common cavity, Size 12			

Type	Material number
OD210103890000	R901109832
OD210104890000	R901109834

Type	Material number

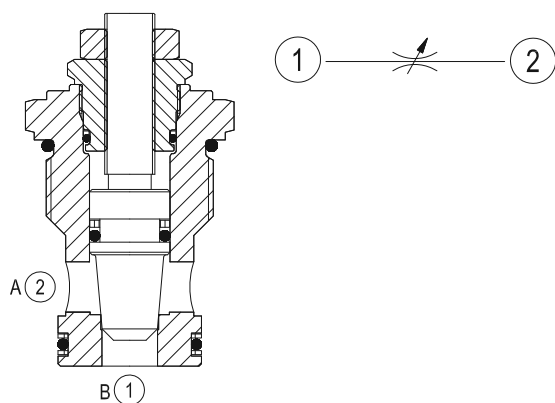
RE 18321-29/02.11 1/2  
Replaces: RE 18321-29/01.10

## Flow control valve, cartridge restrictor

Common cavity, Size 16

ST-C-16

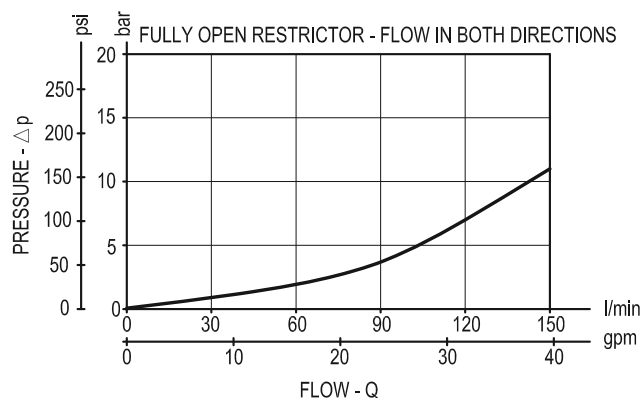
OD.21.01 - X - 75



### Description

Increasing the orifice value from fully closed to fully open, flow is permitted and regulated bi-directional from 1 to 2 and from 2 to 1.

### Performance

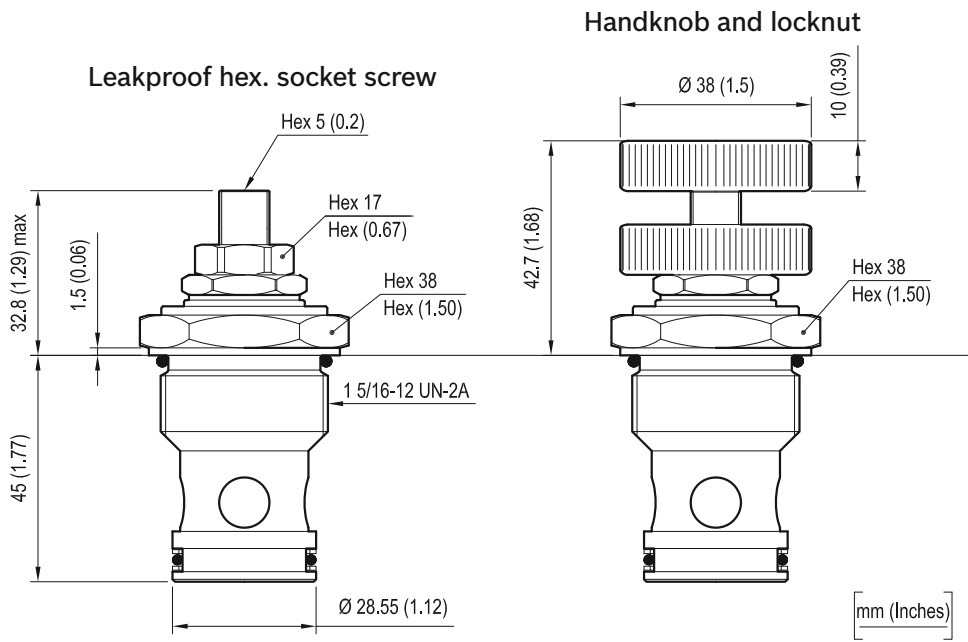


### Technical data

Max. operating pressure	bar (psi)	350 (5000)
Rated flow	l/min. (gpm)	150 (39)
Fluid temperature range	°C (°F)	-30 to 100 (-22 to 212)
Installation torque	Nm (ft-lbs)	80-100 (59-74)
Weight	kg (lbs)	0.31 (0.68)
Cavity		CA-16A-2N see data sheet RE 18325-70
Seal kit (*)	code material no.	RG16A2010530100 R930003262
Fluids		Mineral-based or synthetics with lubricating properties at viscosities of 10 to 500 mm <sup>2</sup> /s (cSt)
Filtration		Nominal value max. 10µm (NAS 8) ISO 4406 19/17/14
Installation		No restrictions
Other Technical Data		See data sheet RE 18350-50

(\*) Only external seals for 10 valves

Dimensions



Ordering code

OD.21.01		X	75	00	*
Flow control valve, cartridge restrictor					Series 0/A to L unchanged performances and dimensions
					Version and options standard
Adjustments					Common cavity, Size 16
= 03 Leakproof hex. socket screw					
= 04 Handknob and locknut					

Type	Material number
OD210103750000	R901109837
OD210104750000	R901109838

Type	Material number

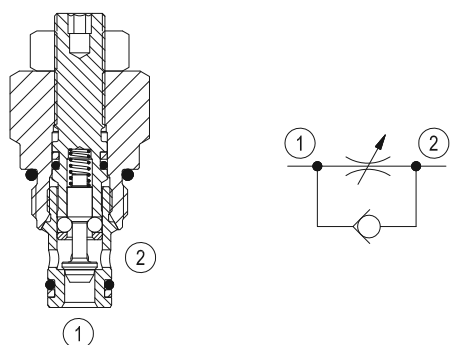
RE 18321-10/11.09 1/2  
Replaces: RE 00162-02/01.06

## Needle restrictor, free reverse flow

Common cavity, Size 08

STVU-08A

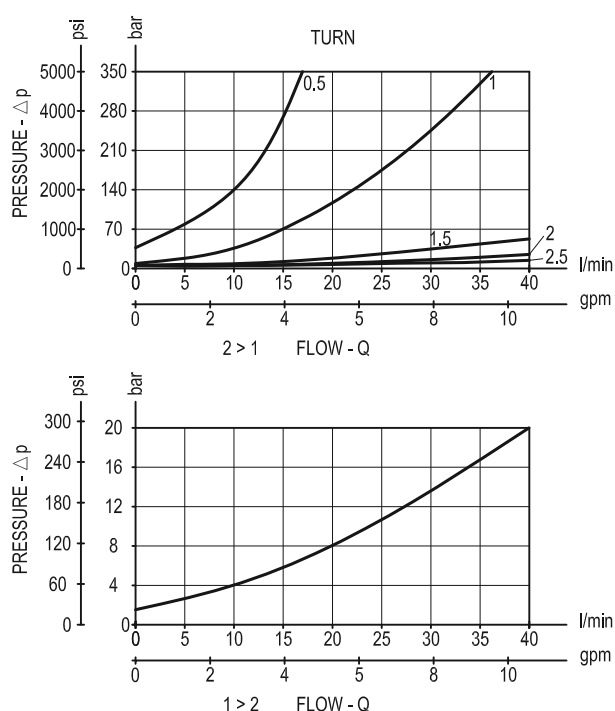
04.01.03 - X - 56.00



### Description

With flow from 2 to 1, the valve provides a fully adjustable orifice restriction. Free flow is permitted from 1 to 2, regardless of valve adjustment, by when pressure overcomes the spring bias of the valve's check function.

### Performance



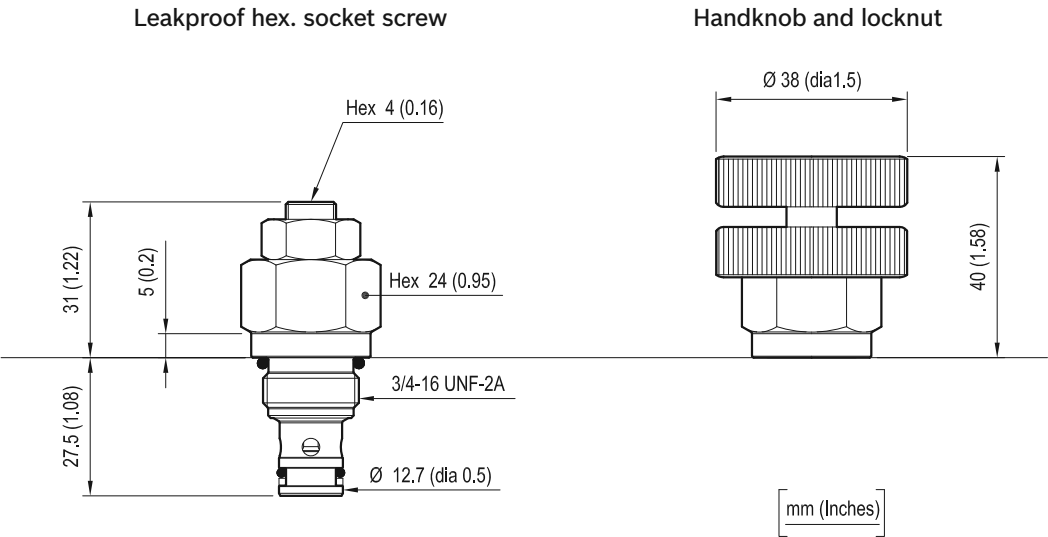
### Technical data

Max. operating pressure	bar (psi)	350 (5000)
Max. flow	l/min. (gpm)	40 (11)
Max. internal leakage (*)	(drops/min.)	15 closed
Fluid temperature range	°C (°F)	-30 to 100 (-22 to 212)
Installation torque	Nm (ft-lbs)	34-41 (25-30)
Weight	kg (lbs)	0.16 (0.35)
Cavity		CA-08A-2N see data sheet RE 18325-70
Seal kit (**)	code material no.	RG08A2010520100 R901101437
Fluids		Mineral-based or synthetics with lubricating properties at viscosities of 5 to 800 mm <sup>2</sup> /s (cSt)
Filtration		Nominal value max. 10µm (NAS 8) ISO 4406 19/17/14
Installation		No restrictions
Other Technical Data		See data sheet RE 18350-50

(\*) Measured at 200 bar (2900 psi)

(\*\*) Only external seals for 10 valves

Dimensions



Ordering code

04.01.03	X	56	00	00	*
----------	---	----	----	----	---

Needle restrictor,free reverse flow

Adjustments

= 03 Leakproof hex. socket screw

= 04 Handknob and locknut

Common cavity, Size 08

Series 0/A to L  
unchanged performances and dimensions

Version and options standard

Type	Material number
040103035600000	R930000002
040103045600000	R930000003

Type	Material number

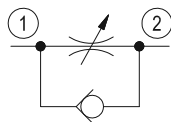
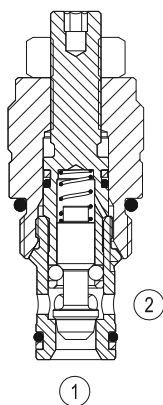
RE 18321-11/01.10 1/2  
Replaces: RE 00162-02/01.06

## Needle restrictor, free reverse flow

Common cavity, Size 10

STVU-10A

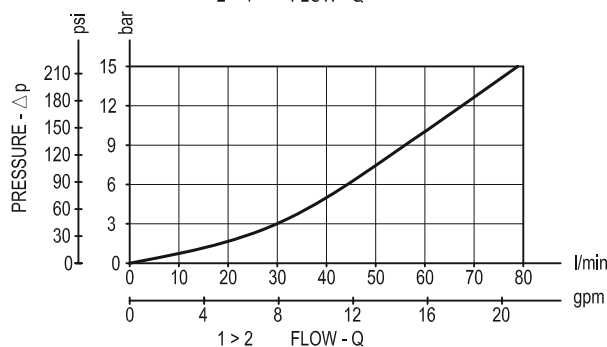
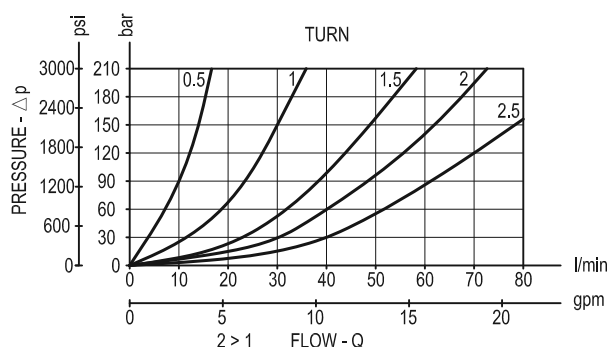
04.01.05 - X - 85.00



### Description

With flow from 2 to 1, the valve provides a fully adjustable orifice restriction. Free flow is permitted from 1 to 2, regardless of valve adjustment, by when pressure overcomes the spring bias of the valve's check function.

### Performance



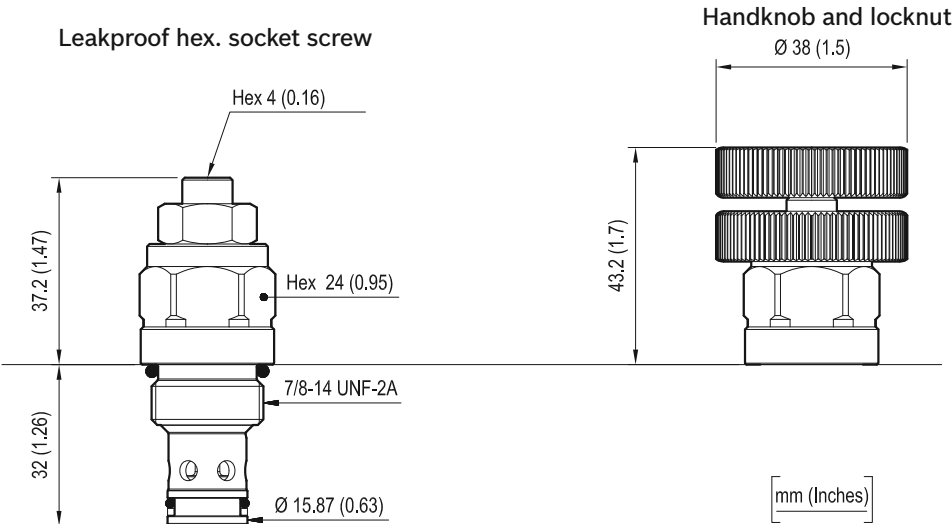
### Technical data

Max. operating pressure	bar (psi)	350 (5000)
Max. flow	l/min. (gpm)	80 (22)
Max. internal leakage (*)	drops/min.	15 closed
Fluid temperature range	°C (°F)	-30 to 100 (-22 to 212)
Installation torque	Nm (ft-lbs)	41-47 (30-35)
Weight	kg (lbs)	0.2 (0.44)
Cavity		CA-10A-2N see data sheet RE 18325-70
Seal kit (**)	code material no.	RG10A2010520100 R901111363
Fluids		Mineral-based or synthetics with lubricating properties at viscosities of 5 to 800 mm <sup>2</sup> /s (cSt)
Filtration		Nominal value max. 10µm (NAS 8) ISO 4406 19/17/14
Installation		No restrictions
Other Technical Data		See data sheet RE 18350-50

(\*) Measured at 200 bar (2900 psi)

(\*\*) Only external seals for 10 valves

Dimensions



Ordering code

04.01.05	X	85	00	00	*
----------	---	----	----	----	---

Needle restrictor, free reverse flow

Adjustments

= 03 Leakproof hex. socket screw

= 04 Handknob and locknut

Common cavity, Size 10

Series 0/A to L  
unchanged performances and dimensions

Version and options standard

Type	Material number
040105038500000	R930005606
040105048500000	R930005607

Type	Material number

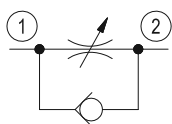
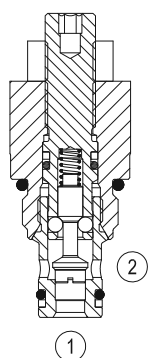
RE 18321-09/01.10 1/2  
Replaces: RE 00162-02/01.06

## Needle restrictor, free reverse flow, fine adjustment

Common cavity, Size 08

STFU-08A

04.01.06 - X - 56.00

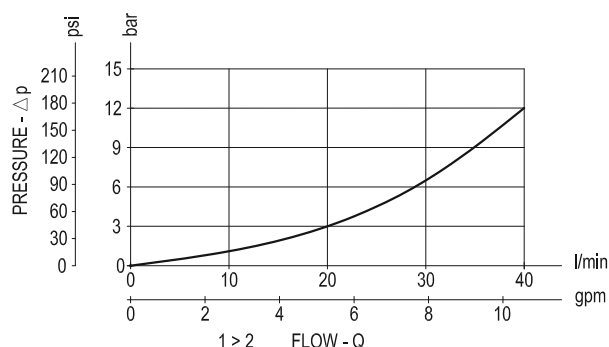
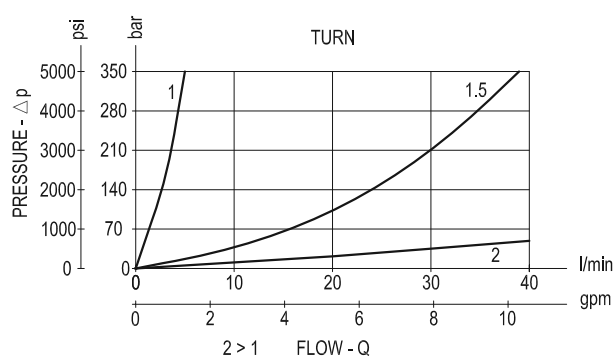


### Description

With flow from 2 to 1, the valve provides a fully adjustable orifice restriction. Free flow is permitted from 1 to 2, regardless of valve adjustment, by when pressure overcomes the spring bias of the valve's check function.

STFU, compared to STVU, is suitable for applications requiring fine adjustments.

### Performance



### Technical data

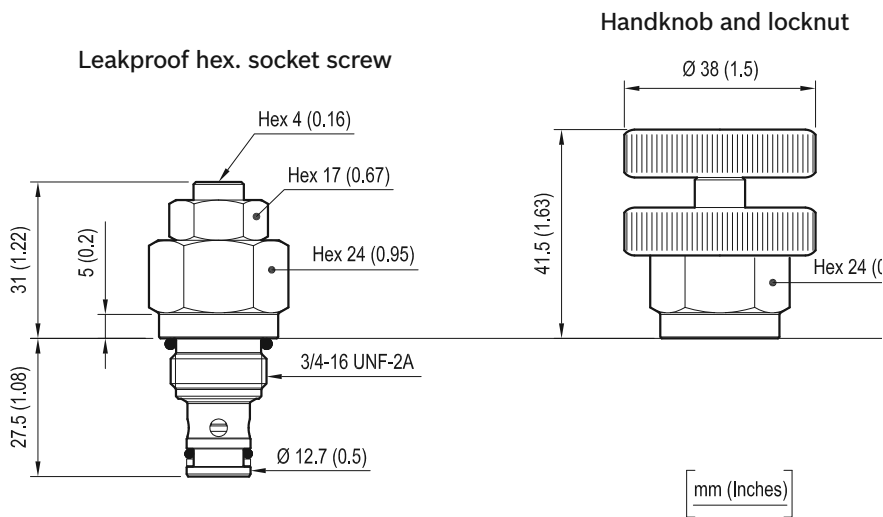
Max. operating pressure	bar (psi)	350 (5000)
Max. flow	l/min. (gpm)	40 (11)
Max. internal leakage (*)	(drops/min.)	15 closed
Fluid temperature range	°C (°F)	-30 to 100 (-22 to 212)
Installation torque	Nm (ft-lbs)	34-41 (25-30)
Weight	kg (lbs)	0.16 (0.35)
Cavity		CA-08A-2N see data sheet RE 18325-70
Seal kit (**)	code material no.	RG08A2010520100 R901101437
Fluids		Mineral-based or synthetics with lubricating properties at viscosities of 5 to 800 mm <sup>2</sup> /s (cSt)
Filtration		Nominal value max. 10µm (NAS 8) ISO 4406 19/17/14
Installation		No restrictions
Other Technical Data		See data sheet RE 18350-50

(\*) Measured at 200 bar (2900 psi)

(\*\*) Only external seals for 10 valves



Dimensions



Ordering code

04.01.06	X	56	00	00	*
Needle restrictor, free reverse flow		Series 0/A to L unchanged performances and dimensions			
Adjustments		Version and options standard			
= 03 Leakproof hex. socket screw					
= 04 Handknob and locknut					
Common cavity, Size 08					

Type	Material number
040106035600000	R930001067
040106045600000	R930001068

Type	Material number

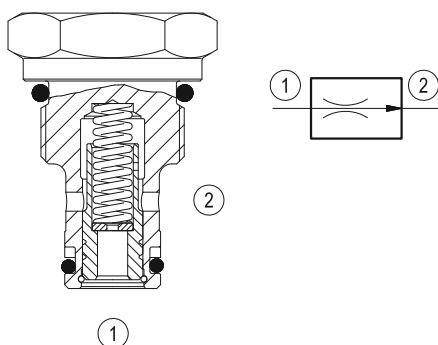
RE 18321-12/09.09 1/2  
Replaces: RE 00162-02/01.06

## Flow control, 2-way pressure compensated fixed setting

Common cavity, Size 08

VRFA-08A

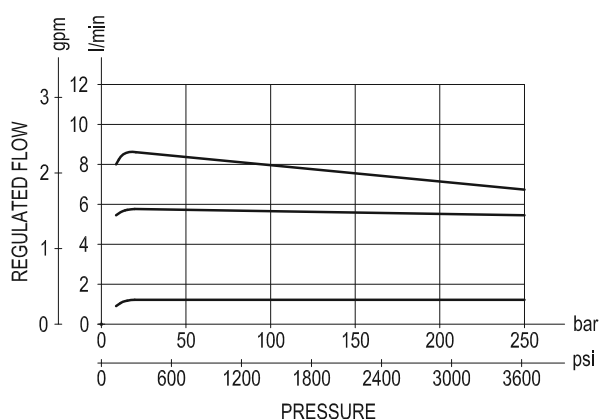
04.02.01.00.56 - Z



### Description

A constant flow rate, regardless of system pressures, is established from 1 to 2 while a minimum pressure differential of 10 bar (145 psi) exists between the two ports. The valve cannot be adjusted for variable flow output. Flow from 2 to 1 is limited by the diameter of the selected control orifice and is not pressure compensated.

### Performance

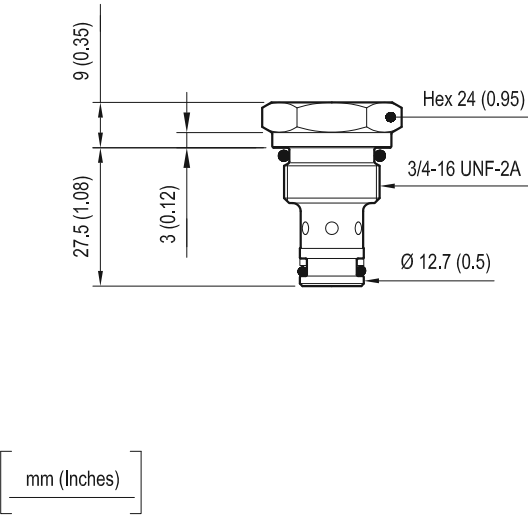


### Technical data

Pressure min-max	bar (psi)	10-210 (145-3000)
Flow range	l/min. (gpm)	see "Regulated flow range" table
Fluid temperature range	°C (°F)	-30 to 100 (-22 to 212)
Installation torque	Nm (ft-lbs)	34-41 (25-30)
Weight	kg (lbs)	0.12 (0.27)
Cavity		CA-08A-2N see data sheet RE 18325-70
Seal kit (*)	code material no.	RG08A2010520100 R901101437
Fluids		Mineral-based or synthetics with lubricating properties at viscosities of 10 to 500 mm <sup>2</sup> /s (cSt)
Filtration		Nominal value max. 10µm (NAS 8) ISO 4406 19/17/14
Installation		No restrictions
Other Technical Data		See data sheet RE 18350-50

(\*) Only external seals for 10 valves

Dimensions



Ordering code

04.02.01.00	56	Z	00	*
-------------	----	---	----	---

Flow control, 2-way pressure compensated fixed setting

Common cavity, Size 08

Series 0/A to L  
unchanged performances and dimensions

Version and options standard

	Regulated flow range l/min. (gpm) ±10%
= 09	0.9 (0.24)
= 13	1.3 (0.34)
= 15	1.5 (0.4)
= 20	2 (0.53)
= 30	3 (0.79)
= 40	4 (1.06)
= 53	5.3 (1.4)
= 65	6.5 (1.72)
= 80	8 (2.11)

Type	Material number
040201005609000	R901109350
04020100561300A	R901109351
040201005615000	R901184436
04020100562000A	R901109352
040201005630000	R901109355

Type	Material number
04020100564000A	R901109357
040201005653000	R901109360
04020100566500A	R901109361
04020100568000A	R901109362

Bosch Rexroth Oil Control S.p.A.  
Via Leonardo da Vinci 5  
P.O. Box no. 5  
41015 Nonantola – Modena, Italy  
Tel. +39 059 887 611  
Fax +39 059 547 848  
cartridges@oilcontrol.com  
www.boschrexroth.com

© This document, as well as the data, specifications and other information set forth in it, are the exclusive property of Bosch Rexroth Oil Control S.p.a.. It may not be reproduced or given to third parties without its consent.

The data specified above only serve to describe the product. No statements concerning a certain condition or suitability for a certain application can be derived from our information. The information given does not release the user from the obligation of own judgment and verification. It must be remembered that our products are subject to a natural process of wear and aging.

Subject to change.

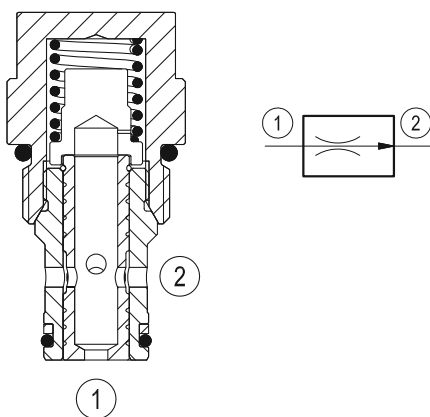
RE 18321-13/09.09 1/2  
Replaces: RE 00162-02/01.06

## Flow control, 2-way pressure compensated fixed setting

Common cavity, Size 10

VRFA-10A-TF

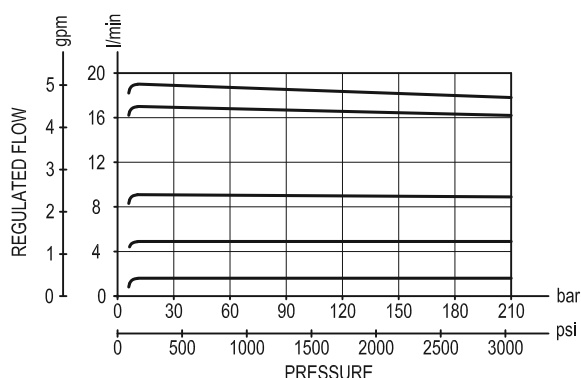
04.02.01.00.85 - Z



### Description

A constant flow rate, regardless of system pressures, is established from 1 to 2 while a minimum pressure differential of 14 bar (200 psi) exists between the two ports. The valve cannot be adjusted for variable flow output. Flow from 2 to 1 is limited by the diameter of the selected control orifice and is not pressure compensated.

### Performance

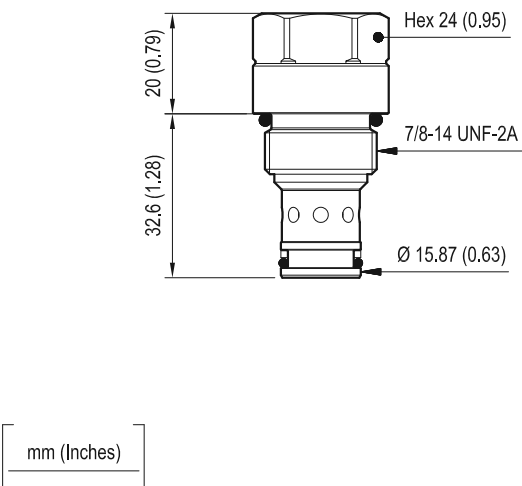


### Technical data

Pressure min-max	bar (psi)	14-350 (200-5000)
Flow range	l/min. (gpm)	See "Regulated flow range" table
Fluid temperature range	°C (°F)	-30 to 100 (-22 to 212)
Installation torque	Nm (ft-lbs)	41-47 (30-35)
Weight	kg (lbs)	0.14 (0.31)
Cavity		CA-10A-2N see data sheet RE 18325-70
Seal kit (*)	code material no.	RG10A2010520100 R901111363
Fluids		Mineral-based or synthetics with lubricating properties at viscosities of 10 to 500 mm <sup>2</sup> /s (cSt)
Filtration		Nominal value max. 10µm (NAS 8) ISO 4406 19/17/14
Installation		No restrictions
Other Technical Data		See data sheet RE 18350-50

(\*) Only external seals for 10 valves

Dimensions



Ordering code

04.02.01.00	85	Z	00	*
-------------	----	---	----	---

Flow control, 2-way pressure compensated fixed setting

Common cavity, Size 10

Series 0/A to L  
unchanged performances and dimensions

Version and options standard

	Regulated flow range l/min. (gpm) ±10%
= 02	1.7 (0.5)
= 04	3.5 (0.9)
= 05	5 (1.3)
= 07	7.2 (1.9)
= 09	8.7 (2.3)
= 17	17 (4.5)
= 19	19 (5)

Type	Material number
040201008502000	R930005608
040201008504000	R930005609
040201008505000	R930005610
040201008507000	R930005611
040201008509000	R930005612

Type	Material number
040201008517000	R930005613
040201008519000	R930005614

Bosch Rexroth Oil Control S.p.A.  
Via Leonardo da Vinci 5  
P.O. Box no. 5  
41015 Nonantola – Modena, Italy  
Tel. +39 059 887 611  
Fax +39 059 547 848  
cartridges@oilcontrol.com  
www.boschrexroth.com

© This document, as well as the data, specifications and other information set forth in it, are the exclusive property of Bosch Rexroth Oil Control S.p.a.. It may not be reproduced or given to third parties without its consent.

The data specified above only serve to describe the product. No statements concerning a certain condition or suitability for a certain application can be derived from our information. The information given does not release the user from the obligation of own judgment and verification. It must be remembered that our products are subject to a natural process of wear and aging.

Subject to change.

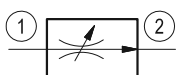
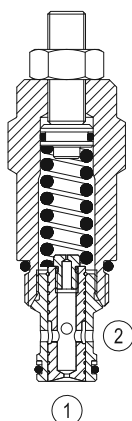
RE 18321-15/09.09 1/2  
Replaces: RE 00162-02/01.06

## Flow control, 2-way pressure compensated partially adjustable

Common cavity, Size 10

VRFA-10A

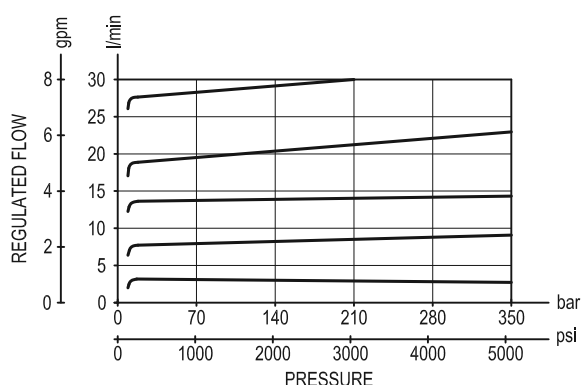
04.02.01 - X - 85 - Z



### Description

A constant flow rate, regardless of system pressures, is established from 1 to 2 while a minimum pressure differential of 14 bar (200 psi) exists between the two ports. Output flow can be varied through a limited range of adjustment and coordinate change in minimum required pressure differential. Flow from 2 to 1 is limited by the diameter of the selected control orifice and is not pressure compensated.

### Performance



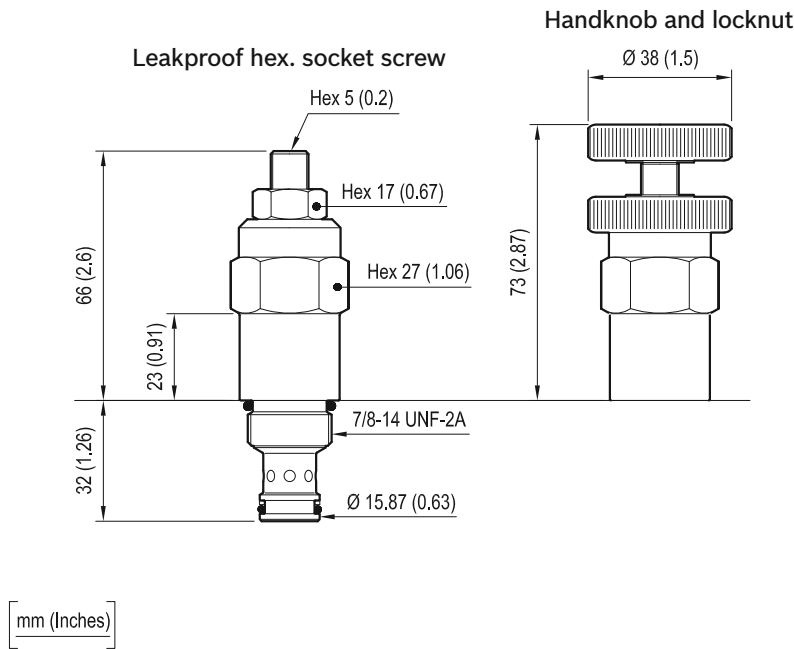
### Technical data

Pressure min-max	bar (psi)	14-350 (200-5000)
Flow range	l/min. (gpm)	See "Regulated flow range" table
Fluid temperature range	°C (°F)	-30 to 100 (-22 to 212)
Installation torque	Nm (ft-lbs)	41-47 (30-35)
Weight (*)	kg (lbs)	0.26 (0.57)
Cavity		CA-10A-2N see data sheet RE 18325-70
Seal kit Buna N	code material no.	RG10A2010520100 R901111363
Fluids		Mineral-based or synthetics with lubricating properties at viscosities of 10 to 500 mm <sup>2</sup> /s (cSt)
Filtration		Nominal value max. 10µm (NAS 8) ISO 4406 19/17/14
Installation		No restrictions
Other Technical Data		See data sheet RE 18350-50

(\*) Standard version X=03 type

(\*\*) Only external seals for 10 valves

Dimensions



Ordering code

04.02.01	X	85	Z	00	*
----------	---	----	---	----	---

Flow control, 2-way pressure compensated partially adjustable

Adjustments

- = 03 Leakproof hex.socket
- = 04 Handknob and locknut

Common cavity, Size 10

Series 0/A to L  
unchanged performances and dimensions

Version and options standard

	Regulated flow range l/min. (gpm)
= 04	3-4.2 (0.79-1.11)
= 06	4-5.8 (1.06-1.53)
= 08	5.5-7.8 (1.45-2.06)
= 11	7.5-11 (1.98-2.91)
= 14	9.5-14 (2.51-3.70)
= 20	13-20 (3.44-5.28)
= 26	19-26 (5.02-6.87)

Type	Material number
040201038504000	R901109325
040201038506000	R901109327
040201038508000	R901109330
040201038511000	R901109333
040201038514000	R901109334
040201038520000	R901109335
040201038526000	R901109336

Type	Material number
040201048504000	R901109339
040201048506000	R901109340
040201048508000	R901109341
040201048511000	R901109343
040201048514000	R901109344
040201048520000	R901109345
040201048526000	R901109347

Bosch Rexroth Oil Control S.p.A.  
Via Leonardo da Vinci 5  
P.O. Box no. 5  
41015 Nonantola – Modena, Italy  
Tel. +39 059 887 611  
Fax +39 059 547 848  
cartridges@oilcontrol.com  
www.boschrexroth.com

© This document, as well as the data, specifications and other information set forth in it, are the exclusive property of Bosch Rexroth Oil Control S.p.a.. It may not be reproduced or given to third parties without its consent.

The data specified above only serve to describe the product. No statements concerning a certain condition or suitability for a certain application can be derived from our information. The information given does not release the user from the obligation of own judgment and verification. It must be remembered that our products are subject to a natural process of wear and aging.

Subject to change.

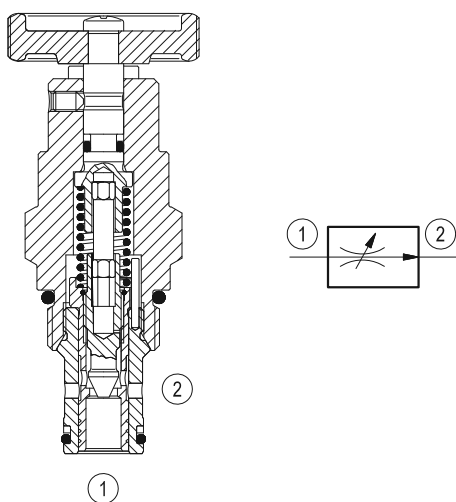
RE 18321-16/09.09 1/2  
Replaces: RE 00162-02/01.06

## Flow control, 2-way pressure compensated fully adjustable

Common cavity, Size 10

VRFB-10A

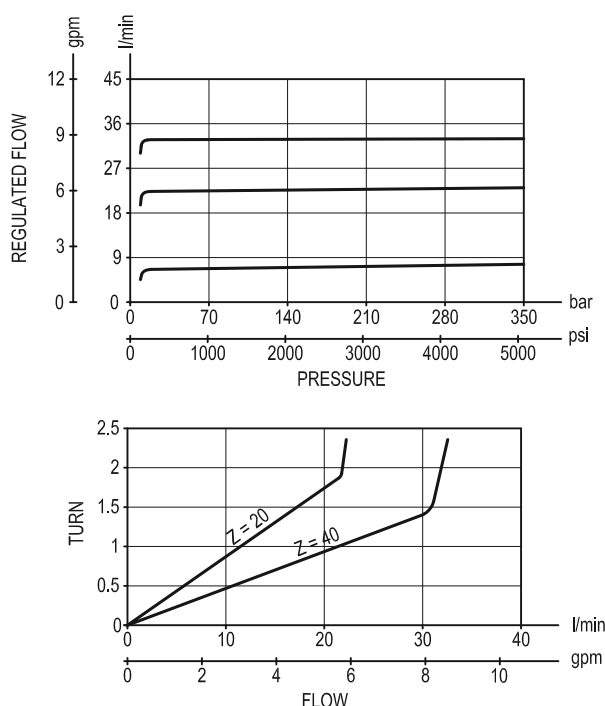
04.02.02 - X - 85 - Z



### Description

A constant flow rate, regardless of system pressures, is established from 1 to 2 while a minimum pressure differential of 14 bar (200 psi) exists between the two ports. Output flow can be varied from closed to the nominal maximum rating for the valve. Flow from 2 to 1 is limited by the diameter of the selected control orifice and is not pressure compensated.

### Performance



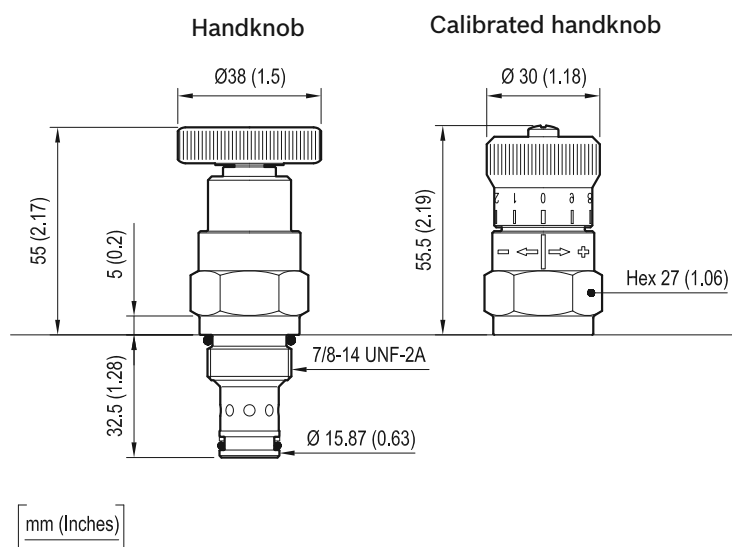
### Technical data

Pressure min-max	bar (psi)	14-350 (200-5000)
Flow range	l/min. (gpm)	See "Regulated flow range" table
Fluid temperature range	°C (°F)	-30 to 100 (-22 to 212)
Installation torque	Nm (ft-lbs)	41-47 (30-35)
Weight (*)	kg (lbs)	0.27 (0.59)
Cavity		CA-10A-2N see data sheet RE 18325-70
Seal kit (**)	code material no.	RG10A2010520100 R901111363
Fluids		Mineral-based or synthetics with lubricating properties at viscosities of 10 to 500 mm <sup>2</sup> /s (cSt)
Filtration		Nominal value max. 10µm (NAS 8) ISO 4406 19/17/14
Installation		No restrictions
Other Technical Data		See data sheet RE 18350-50

(\*) Standard version X=04 type

(\*\*) Only external seals for 10 valves





04.02.02	X	85	Z	00	*
----------	---	----	---	----	---

	Regulated flow range l/min. (gpm)
= 20	0.1-20 (0.03-5.28)
= 40	0.2-30 (0.05-7.93)

Type	Material number
040202048520000	R901106646
040202048540000	R901095981
040202408520000	R901106643
040202408540000	R901106645

Type	Material number

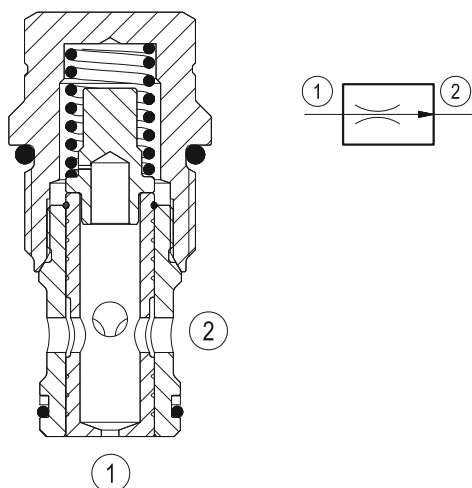
RE 18321-14/09.09 1/2  
Replaces: RE 00162-02/01.06

## Flow control, 2-way pressure compensated fixed setting

Common cavity, Size 12

VRFA-12A-TF

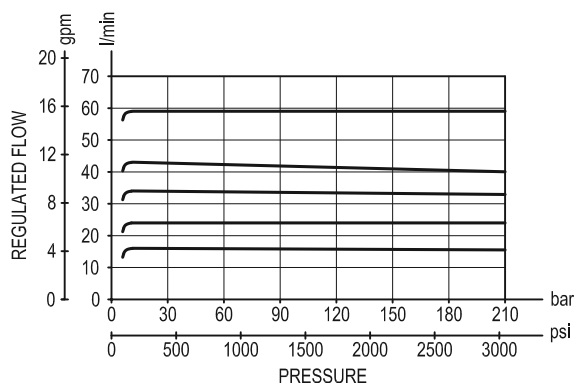
04.02.03.00.57 - Z



### Description

A constant flow rate, regardless of system pressures, is established from 1 to 2 while a minimum pressure differential of 14 bar (200 psi) exists between the two ports. The valve cannot be adjusted for variable flow output. Flow from 2 to 1 is limited by the diameter of the selected control orifice and is not pressure compensated.

### Performance

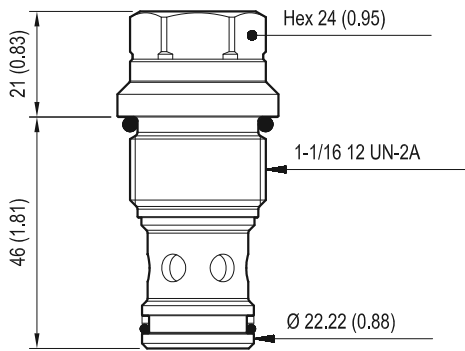


### Technical data

Pressure min-max	bar (psi)	14-350 (200-5000)
Flow range	l/min. (gpm)	See "Regulated flow range" table
Fluid temperature range	°C (°F)	-30 to 100 (-22 to 212)
Installation torque	Nm (ft-lbs)	81-95 (60-70)
Weight	kg (lbs)	0.26 (0.57)
Cavity		CA-12A-2N see data sheet RE 18325-70
Seal kit (*)	code material no.	RG12A2010520100 R901111377
Fluids		Mineral-based or synthetics with lubricating properties at viscosities of 10 to 500 mm <sup>2</sup> /s (cSt)
Filtration		Nominal value max. 10µm (NAS 8) ISO 4406 19/17/14
Installation		No restrictions
Other Technical Data		See data sheet RE 18350-50

(\*) Only external seals for 10 valves

Dimensions



[ mm (Inches) ]

Ordering code

04.02.03.00	57	Z	00	*
-------------	----	---	----	---

Series 0/A to L  
unchanged performances and dimensions

Flow control, 2-way pressure  
compensated fixed setting

Version and options standard

Common cavity, Size 12

	Regulated flow range l/min. (gpm) ±10%
= 15	15 (4)
= 20	20 (5)
= 23	23 (6)
= 26	26 (7)
= 29	29 (8)
= 37	37 (10)
= 41	41 (11)
= 45	45 (12)
= 50	50 (13)
= 58	58 (15)
= 63	63 (17)

Type	Material number
040203005715000	R930005616
040203005720000	R930005617
040203005723000	R930005618
040203005726000	R930005619
040203005729000	R930005620
040203005737000	R930005621

Type	Material number
040203005741000	R930005622
040203005745000	R930005623
040203005750000	R930005624
040203005758000	R930005625
040203005763000	R930005626

Bosch Rexroth Oil Control S.p.A.  
Via Leonardo da Vinci 5  
P.O. Box no. 5  
41015 Nonantola – Modena, Italy  
Tel. +39 059 887 611  
Fax +39 059 547 848  
cartridges@oilcontrol.com  
www.boschrexroth.com

© This document, as well as the data, specifications and other information set forth in it, are the exclusive property of Bosch Rexroth Oil Control S.p.a.. It may not be reproduced or given to third parties without its consent.

The data specified above only serve to describe the product. No statements concerning a certain condition or suitability for a certain application can be derived from our information. The information given does not release the user from the obligation of own judgment and verification. It must be remembered that our products are subject to a natural process of wear and aging.

Subject to change.

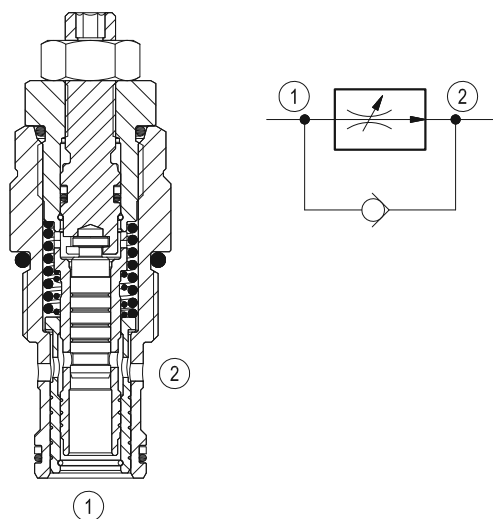
RE 18321-30/01.10 1/2  
Replaces: RE 00162-02/01.06

# Flow control valve, 2-way pressure compensated fully adjustable, free reverse flow

Common cavity, Size 12

VRFE-12A

04.07.01 - X - 57 - Z

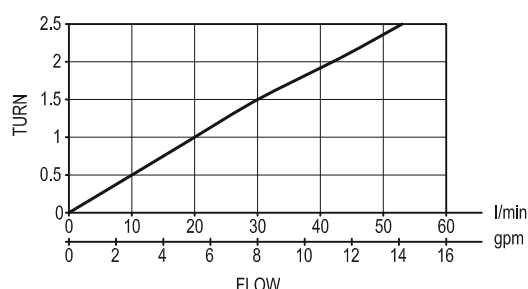
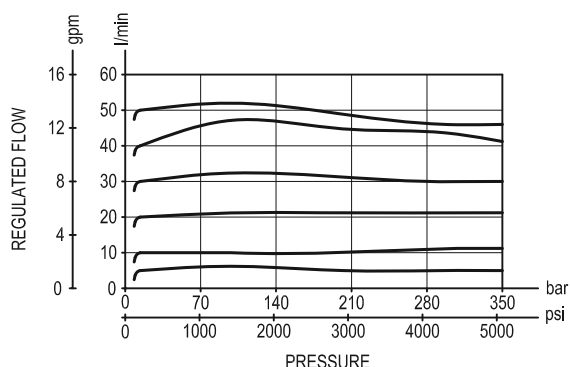


## Description

A constant flow rate, regardless of system pressures, is established from 1 to 2 while a minimum pressure differential of 14 bar (200 psi) exists between the two ports. Output flow can be varied from closed to the nominal maximum rating for the valve.

Free flow is permitted from 2 to 1, regardless of valve adjustment, by when pressure overcomes the spring bias of the valve check function.

## Performance

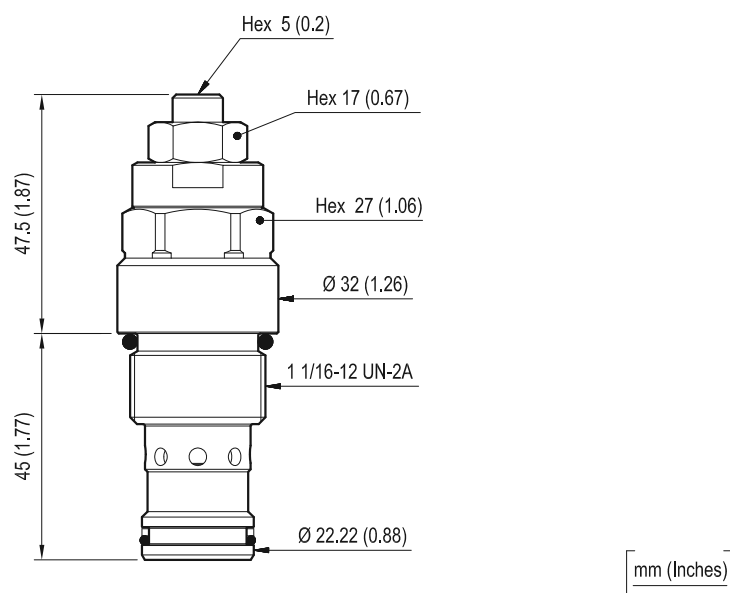


## Technical data

Pressure min-max	bar (psi)	14-350 (200-5000)
Flow range	l/min. (gpm)	See "Regulated flow range" table
Fluid temperature range	°C (°F)	-30 to 100 (-22 to 212)
Installation torque	Nm (ft-lbs)	81-95 (60-70)
Weight	kg (lbs)	0.30 (0.66)
Cavity		CA-12A-2N see data sheet RE 18325-70
Seal kit (*)	code material no.	RG12A2010520100 R901111377
Fluids		Mineral-based or synthetics with lubricating properties at viscosities of 10 to 500 mm <sup>2</sup> /s (cSt)
Filtration		Nominal value max. 10µm (NAS 8) ISO 4406 19/17/14
Installation		No restrictions
Other Technical Data		See data sheet RE 18350-50

(\*) Only external seals for 10 valves

## Dimensions



### Ordering code

04.07.01	X	57	Z	00	*
----------	---	----	---	----	---

Flow control valve, 2-way pressure compensated fully adjustable, free reverse flow

## Adjustments

= 03 Leakproof hex. socket screw

Common cavity, Size 12

Series 0/A to L  
unchanged performances and dimensions

### Version and options standard

Regulated flow range  
l/min. (gpm)

**= 50**

1-50 (0.26-13.2)

Type	Material number
040701035750000	R930000009

Type	Material number

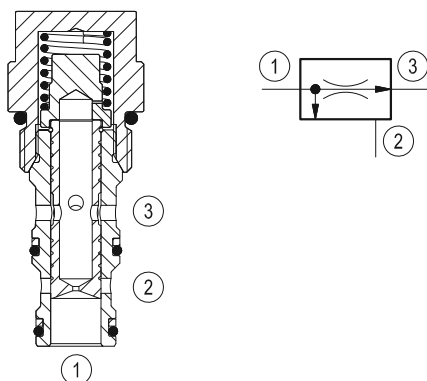
RE 18321-18/09.09 1/2  
Replaces: RE 00162-0201.06

## Flow control, 3-way pressure compensated, combination type fixed setting

Common cavity, Size 10

VRFC-10A-TF

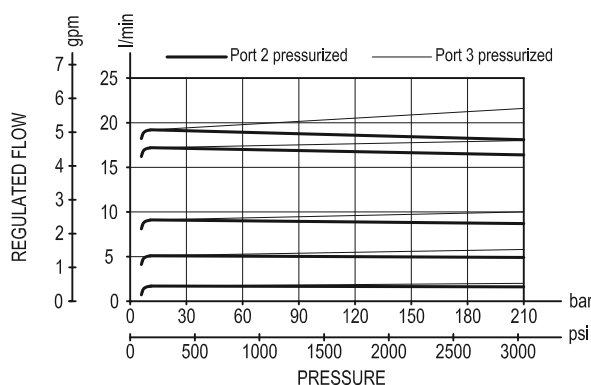
04.04.01.00.85 - Z



### Description

A constant flow rate, regardless of system pressures, is established from 1 to 3 while a minimum pressure differential of 14 bar (200 psi) exists between the two ports. Input flow supplied to 1 in excess of the regulated output at 3 is by-passed to 2. The valve cannot be adjusted for variable flow output. Flow from 3 to 1 is limited by the diameter of the selected control orifice and is not pressure compensated. Flow from 2 to 1 is not permitted.

### Performance

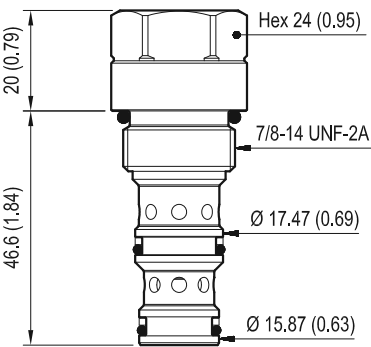


### Technical data

Pressure min-max	bar (psi)	14-350 (200-5000)
Max. inlet flow	l/min. (gpm)	60 (16)
Flow range	l/min. (gpm)	See "Regulated flow range" table
Fluid temperature range	°C (°F)	-30 to 100 (-22 to 212)
Installation torque	Nm (ft-lbs)	41-47 (30-35)
Weight	kg (lbs)	0.14 (0.31)
Cavity		CA-10A-3N see data sheet RE 18325-70
Seal kit (*)	code material no.	RG10A3010520100 R901111369
Fluids		Mineral-based or synthetics with lubricating properties at viscosities of 10 to 500 mm <sup>2</sup> /s (cSt)
Filtration		Nominal value max. 10µm (NAS 8) ISO 4406 19/17/14
Installation		No restrictions
Other Technical Data		See data sheet RE 18350-50

(\*) Only external seals for 10 valves

Dimensions



[mm (Inches)]

Ordering code

04.04.01.00	85	Z	00	*
-------------	----	---	----	---

Series 0/A to L  
unchanged performances and dimensions

Flow control, 3-way pressure  
compensated combination type  
fixed setting

Common cavity, Size 10

Version and options standard

	Regulated flow range l/min. (gpm) ±10%
= 02	1.7 (0.5)
= 04	3.5 (0.9)
= 05	5 (1.3)
= 07	7.2 (1.9)
= 09	8.7 (2.3)
= 17	17 (4.5)
= 19	19 (5)

Type	Material number
040401008502000	R930005627
040401008504000	R930005628
040401008505000	R930005629
040401008507000	R930005630
040401008509000	R930005631

Type	Material number
040401008517000	R930005632
040401008519000	R930005633

Bosch Rexroth Oil Control S.p.A.  
Via Leonardo da Vinci 5  
P.O. Box no. 5  
41015 Nonantola – Modena, Italy  
Tel. +39 059 887 611  
Fax +39 059 547 848  
cartridges@oilcontrol.com  
www.boschrexroth.com

© This document, as well as the data, specifications and other information set forth in it, are the exclusive property of Bosch Rexroth Oil Control S.p.a.. It may not be reproduced or given to third parties without its consent.

The data specified above only serve to describe the product. No statements concerning a certain condition or suitability for a certain application can be derived from our information. The information given does not release the user from the obligation of own judgment and verification. It must be remembered that our products are subject to a natural process of wear and aging.

Subject to change.

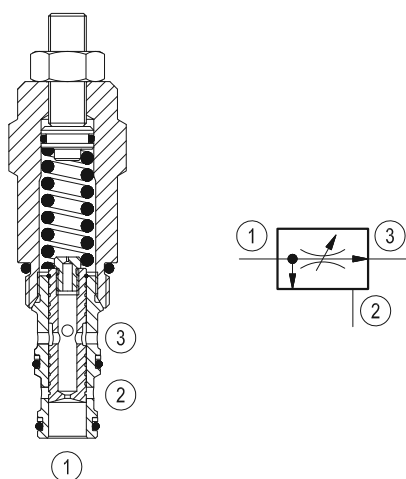
RE 18321-17/09.09 1/2  
Replaces: RE 00162-02/01.06

## Flow control, 3-way pressure compensated combination type partially adjustable

Common cavity, Size 10

VRFC-10A

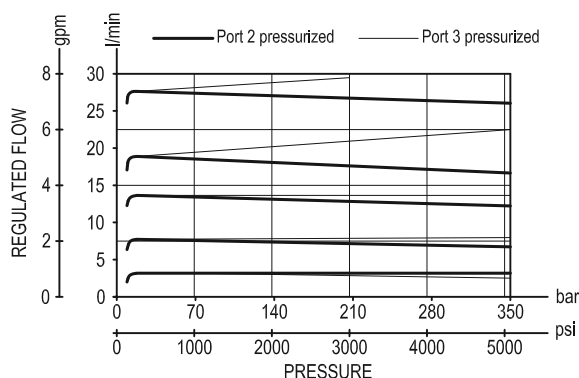
04.04.01 - X - 85 - Z



### Description

A constant flow rate, regardless of system pressures, is established from 1 to 3 while a minimum pressure differential of 14 bar (200 psi) exists between the two ports. Input flow supplied to 1 in excess of the regulated output at 3 is by-passed to 2. Output flow can be varied through a limited range of adjustment and coordinate change in minimum required pressure differential. Flow from 3 to 1 is limited by the diameter of the selected control orifice and is not pressure compensated. Flow from 2 to 1 is not permitted.

### Performance



### Technical data

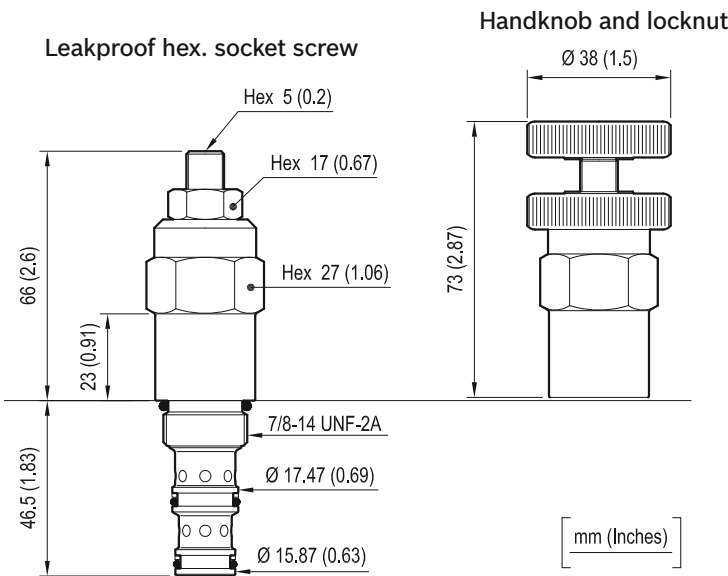
Pressure min-max	bar (psi)	14-350 (200-5000)
Maximum inlet flow	l/min. (gpm)	60 (16)
Flow range	l/min. (gpm)	See "Regulated flow range" table
Fluid temperature range	°C (°F)	-30 to 100 (-22 to 212)
Installation torque	Nm (ft-lbs)	41-47 (30-35)
Weight (*)	kg (lbs)	0.26 (0.57)
Cavity		CA-10A-3N see data sheet RE 18325-70
Seal kit (**)	code material no.	RG10A3010520100 R901111369
Fluids		Mineral-based or synthetics with lubricating properties at viscosities of 10 to 500 mm <sup>2</sup> /s (cSt)
Filtration		Nominal value max. 10µm (NAS 8) ISO 4406 19/17/14
Installation		No restrictions
Other Technical Data		See data sheet RE 18350-50

(\*) Standard version X=03 type

(\*\*) Only external seals for 10 valves



Dimensions



Ordering code

04.04.01	X	85	Z	00	*
----------	---	----	---	----	---

Flow control, 3-way pressure compensated combination type partially adjustable

Adjustments

= 03 Leakproof hex. socket screw

= 04 Handknob and locknut

Common cavity, Size 10

Series 0/A to L unchanged performances and dimensions

Version and options standard

	Regulated flow range l/min. (gpm)
= 02	1.5-2.5 (0.4-0.66)
= 04	3-4.2 (0.79-1.11)
= 06	4-5.8 (1.06-1.53)
= 08	5.5-7.8 (1.45-2.06)
= 09	6.5-9.5 (1.72-2.51)
= 11	7.5-11 (1.98-2.91)
= 14	9.5-14 (2.51-3.70)
= 20	13-20 (3.44-5.28)
= 26	19-26 (5.02-6.87)

Type	Material number
040401038502000	R930000266
040401038504000	R901106648
040401038506000	R901106652
040401038508000	R901106657
040401038509000	R901106659
040401038511000	R901106660
040401038514000	R901106661
040401038520000	R901106662
040401038526000	R901106663

Type	Material number
040401048504000	R901106664
040401048506000	R901106665
040401048508000	R901106666
040401048509000	R901106667
040401048511000	R901106668
040401048514000	R901106669
040401048520000	R901106670
040401048526000	R901106671

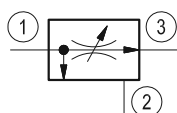
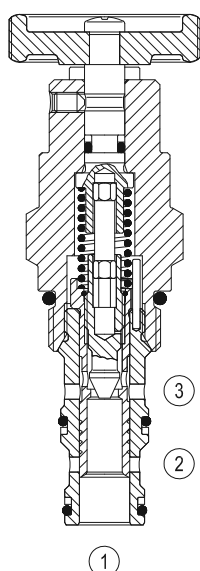
RE 18321-20/09.09 1/2  
Replaces: RE 00162-02/01.06

## Flow control, 3-way pressure compensated, combination type fully adjustable

Common cavity, Size 10

VRFD-10A

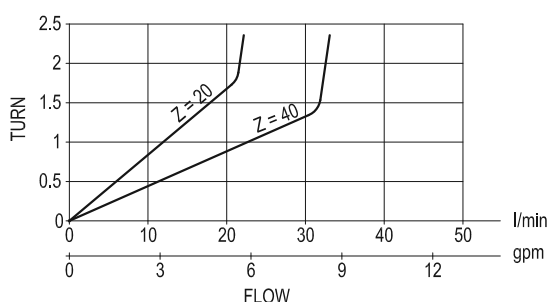
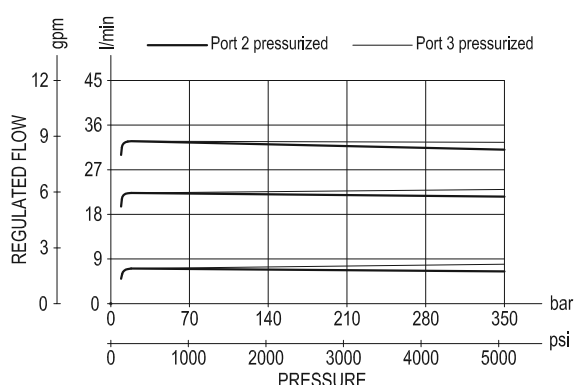
04.04.02 - X - 85 - Z



### Description

A constant flow rate, regardless of system pressures, is established from 1 to 3 while a minimum pressure differential of 14 bar (200 psi) exists between the two ports. Input flow supplied to 1 in excess of the regulated output at 3 is by-passed to 2. Output flow can be varied from closed to the nominal maximum rating for the valve. Flow from 3 to 1 is limited by the diameter of the selected control orifice and is not pressure compensated. Flow from 2 to 1 is not permitted.

### Performance



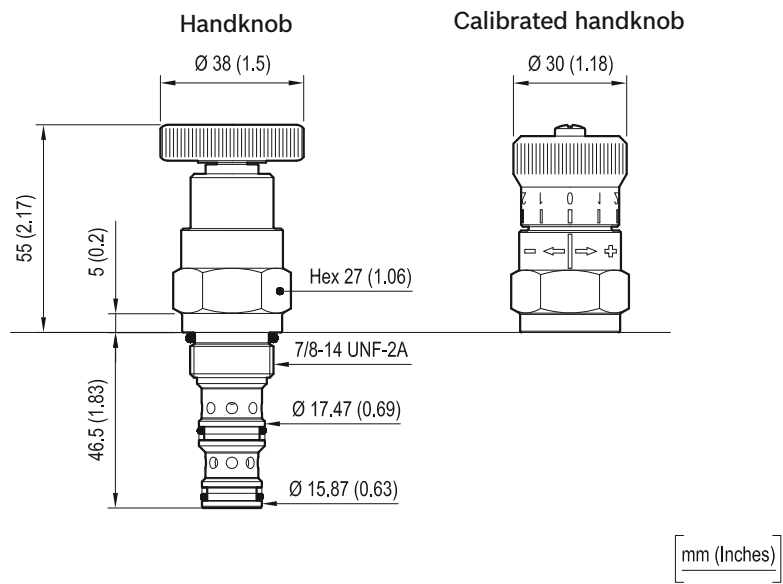
### Technical data

Pressure min-max	bar (psi)	14-350 (200-5000)
Max. inlet flow	l/min. (gpm)	60 (16)
Flow range	l/min. (gpm)	See "Regulated flow range" table
Fluid temperature range	°C (°F)	-30 to 100 (-22 to 212)
Installation torque	Nm (ft-lbs)	41-47 (30-35)
Weight (*)	kg (lbs)	0.26 (0.57)
Cavity		CA-10A-3N see data sheet RE 18325-70
Seal kit (**)	code material no.	RG10A3010520100 R90111369
Fluids		Mineral-based or synthetics with lubricating properties at viscosities of 10 to 500 mm <sup>2</sup> /s (cSt)
Filtration		Nominal value max. 10µm (NAS 8) ISO 4406 19/17/14
Installation		No restrictions
Other Technical Data		See data sheet RE 18350-50

(\*) Standard version X=04 type

(\*\*) Only external seals for 10 valves

Dimensions



Ordering code

04.04.02	X	85	Z	00	*
----------	---	----	---	----	---

Flow control, 3-way pressure compensated, combination type fully adjustable

Adjustments

= 04 Handknob

= 40 Calibrated handknob

Common cavity, Size 10

Series 0/A to L unchanged performances and dimensions

Version and options standard

	Regulated flow range l/min. (gpm)
= 20	0.1-20 (0.03-5.28)
= 40	0.2-30 (0.05-7.93)

Type	Material number
040402048520000	R901106674
040402048540000	R901106675
040402408520000	R901106672
040402408540000	R901106673

Type	Material number

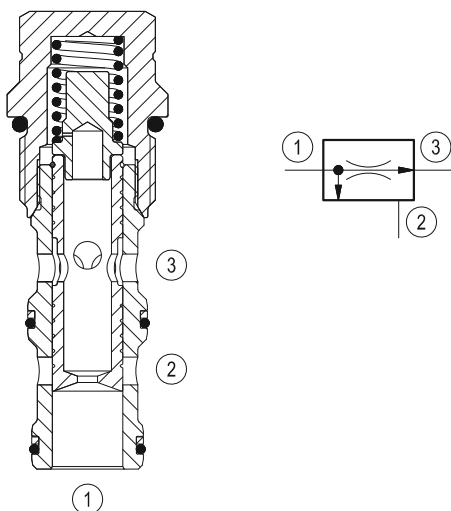
RE 18321-19/09.09 1/2  
Replaces: RE 00162-02/01.06

## Flow control, 3-way pressure compensated, combination type fixed setting

Common cavity, Size 12

VRFC-12A-TF

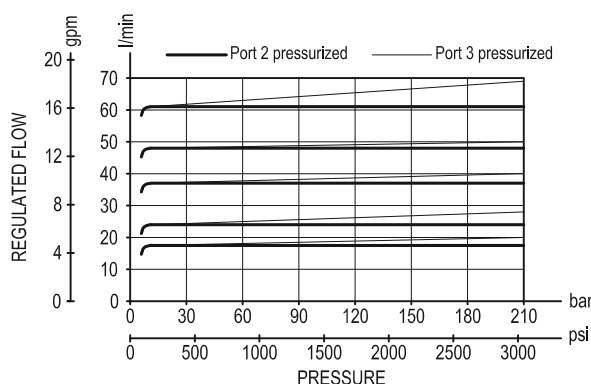
04.04.03.00.57 - Z



### Description

A constant flow rate, regardless of system pressures, is established from 1 to 3 while a minimum pressure differential of 14 bar (200 psi) exists between the two ports. Input flow supplied to 1 in excess of the regulated output at 3 is by-passed to 2. The valve cannot be adjusted for variable flow output. Flow from 3 to 1 is limited by the diameter of the selected control orifice and is not pressure compensated. Flow from 2 to 1 is not permitted.

### Performance

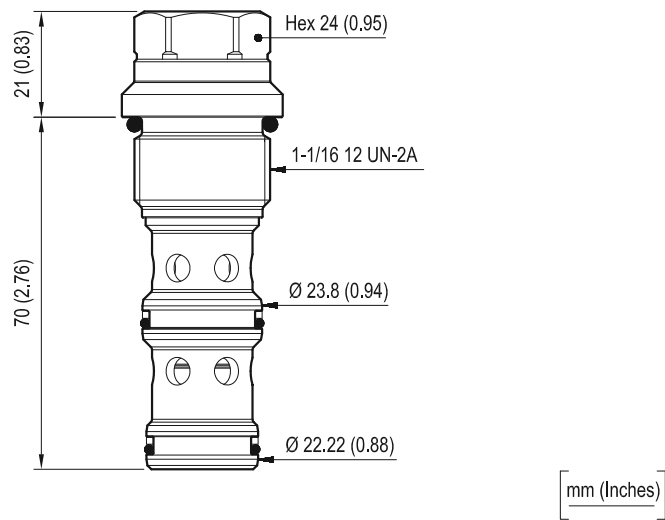


### Technical data

Pressure min-max	bar (psi)	14-350 (200-5000)
Max. inlet flow	l/min. (gpm)	130 (34)
Flow range	l/min. (gpm)	See "Regulated flow range" table
Fluid temperature range	°C (°F)	-30 to 100 (-22 to 212)
Installation torque	Nm (ft-lbs)	81-95 (60-70)
Weight	kg (lbs)	0.26 (0.57)
Cavity		CA-12A-3N see data sheet RE 18325-70
Seal kit (*)	code material no.	RG12A3010520100 R930000941
Fluids		Mineral-based or synthetics with lubricating properties at viscosities of 10 to 500 mm <sup>2</sup> /s (cSt)
Filtration		Nominal value max. 10µm (NAS 8) ISO 4406 19/17/14
Installation		No restrictions
Other Technical Data		See data sheet RE 18350-50

(\*) Only external seals for 10 valves

Dimensions



Ordering code

04.04.03.00	57	Z	00	*
-------------	----	---	----	---

Flow control, 3-way pressure compensated combination type fixed setting

Common cavity, Size 12

Series 0/A to L  
unchanged performances and dimensions

Version and options standard

	Regulated flow range l/min. (gpm) ±10%
= 15	15 (4)
= 20	20 (5)
= 23	23 (6)
= 26	26 (7)
= 29	29 (8)
= 37	37 (10)
= 41	41 (11)
= 45	45 (12)
= 50	50 (13)
= 58	58 (15)
= 63	63 (17)

Type	Material number
040403005715000	R930000070
040403005720000	R930000071
040403005723000	R930000072
040403005726000	R930000073
040403005729000	R930000074
040403005737000	R930000075

Type	Material number
040403005741000	R930000076
040403005745000	R930000077
040403005750000	R930000078
040403005758000	R930000079
040403005763000	R930000080

Bosch Rexroth Oil Control S.p.A.  
Via Leonardo da Vinci 5  
P.O. Box no. 5  
41015 Nonantola – Modena, Italy  
Tel. +39 059 887 611  
Fax +39 059 547 848  
cartridges@oilcontrol.com  
www.boschrexroth.com

© This document, as well as the data, specifications and other information set forth in it, are the exclusive property of Bosch Rexroth Oil Control S.p.a.. It may not be reproduced or given to third parties without its consent.

The data specified above only serve to describe the product. No statements concerning a certain condition or suitability for a certain application can be derived from our information. The information given does not release the user from the obligation of own judgment and verification. It must be remembered that our products are subject to a natural process of wear and aging.

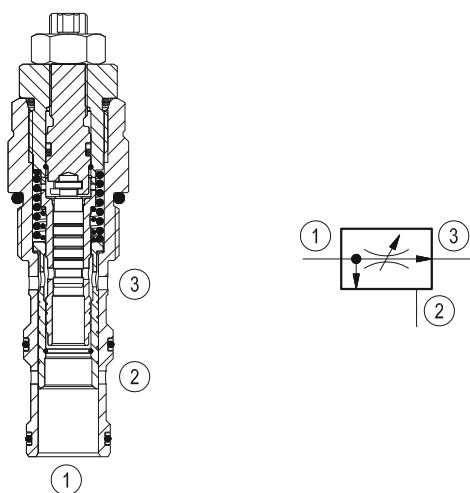
Subject to change.

## Flow control, 3-way pressure compensated, combination type fully adjustable

Common cavity, Size 12

VRFD-12A

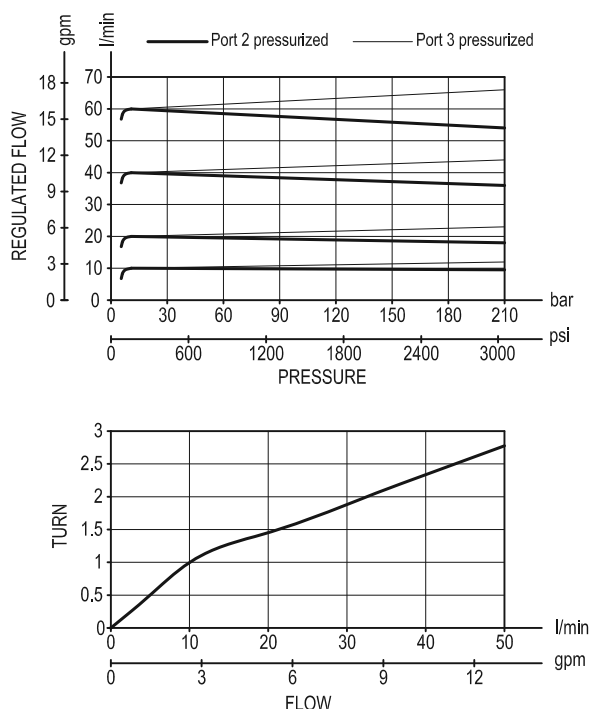
04.04.04 - X - 57 - Z



### Description

A constant flow rate, regardless of system pressures, is established from 1 to 3 while a minimum pressure differential of 14 bar (200 psi) exists between the two ports. Input flow supplied to 1 in excess of the regulated output at 3 is by-passed to 2. Output flow can be varied from closed to the nominal maximum rating for the valve. Flow from 2 to 1 is not permitted.

### Performance



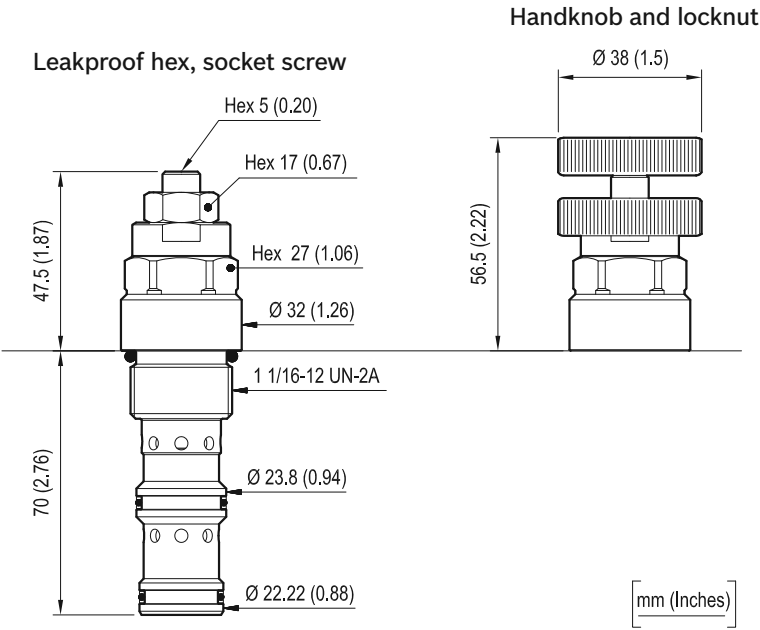
### Technical data

Pressure min-max	bar (psi)	14-350 (200-5000)
Max. inlet flow	l/min. (gpm)	120 (32)
Flow range	l/min. (gpm)	See "Regulated flow range" table
Fluid temperature range	°C (°F)	-30 to 100 (-22 to 212)
Installation torque	Nm (ft-lbs)	81-95 (60-70)
Weight (*)	kg (lbs)	0.3 (0.66)
Cavity		CA-12A-3N see data sheet RE 18325-70
Seal kit (**)	code material no.	RG12A3010530100 R930001668
Fluids		Mineral-based or synthetics with lubricating properties at viscosities of 10 to 500 mm <sup>2</sup> /s (cSt)
Filtration		Nominal value max. 10µm (NAS 8) ISO 4406 19/17/14
Installation		No restrictions
Other Technical Data		See data sheet RE 18350-50

(\*) Standard version X=03 type

(\*\*) Only external seals for 10 valves

Dimensions



Ordering code

04.04.04	X	57	Z	00	*
----------	---	----	---	----	---

Flow control, 3-way pressure compensated, combination type fully adjustable

Adjustments

= 03 Leakproof hex. socket screw

= 04 Handknob and locknut

Common cavity, Size 12

Series 0/A to L unchanged performances and dimensions

Version and options standard

Regulated flow range l/min. (gpm)	
= 50	2-50 (0.6-13.21)

Type	Material number
040404035750000	R930006092
040404045750000	R930006093

Type	Material number

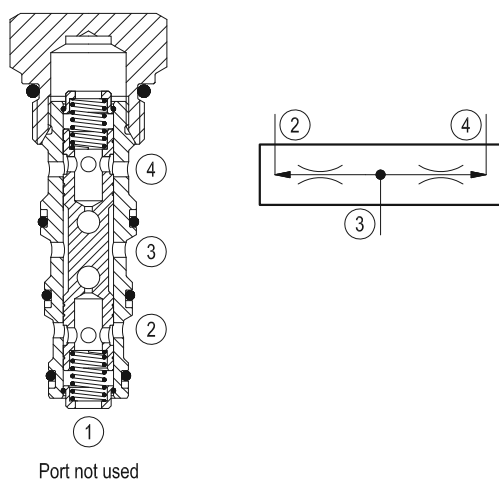
RE 18321-22/09.09 1/2  
Replaces: RE 00162-02/01.06

## Flow divider

Common cavity, Size 10

DSDN-10A

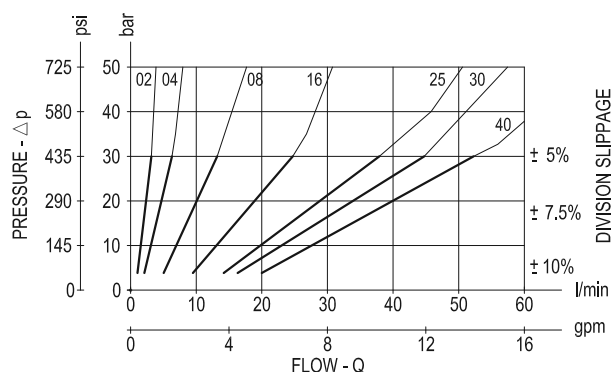
04.05.04.00.85 - Z



### Description

Input flow at 3 will be divided and output equally to 2 and 4 independent of system pressures. Should either 2 or 4 become blocked in flow division mode, approximately 5% of the input flow will be transmitted to the open port. Flow combining is not permitted.

### Performance



### Technical data

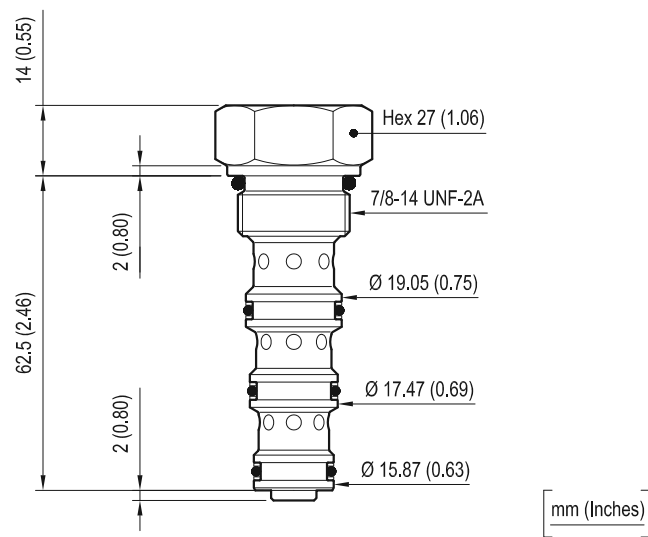
Pressure min-max	bar (psi)	10-350 (145-5000)
Flow range	l/min. (gpm)	See "Range of total flow" table
Fluid temperature range	°C (°F)	-30 to 100 (-22 to 212)
Installation torque	Nm (ft-lbs)	41-47 (30-35)
Division ratio		50% - 50%
Weight	kg (lbs)	0.28 (0.62)
Cavity		CA-10A-4N see data sheet RE 18325-70
Seal kit (*)	code material no.	RG10A4010520100 R901111371
Fluids		Mineral-based or synthetics with lubricating properties at viscosities of 10 to 500 mm <sup>2</sup> /s (cSt)
Filtration		Nominal value max. 10µm (NAS 8) ISO 4406 19/17/14
Installation		No restrictions
Other Technical Data		See data sheet RE 18350-50

(\*) Only external seals for 10 valves

Slippage (tolerance) from theoretical divided flows: ±5% to ±10%, depending from inlet flow (see diagram).  
N.B. Slippage is lowest toward upper limit of nominal range.



Dimensions



Ordering code

04.05.04.00	85	Z	00	*
-------------	----	---	----	---

Flow divider

Common cavity, Size 10

Series 0/A to L  
unchanged performances and dimensions

Version and options standard

	Range of total flow l/min. (gpm)
= 02	1-3 (0.26-0.79)
= 04	2-6 (0.53-1.59)
= 08	5-13 (1.32-3.44)
= 16	9-24 (2.38-6.34)
= 25	14-37 (3.70-9.78)
= 30	16-44 (4.23-11.63)
= 40	20-54 (5.28-14.27)

Type	Material number
040504008502000	R901109840
040504008504000	R901109841
040504008508000	R901109843
040504008516000	R901109844
040504008525000	R901109845

Type	Material number
040504008530000	R901109846
040504008540000	R901109849

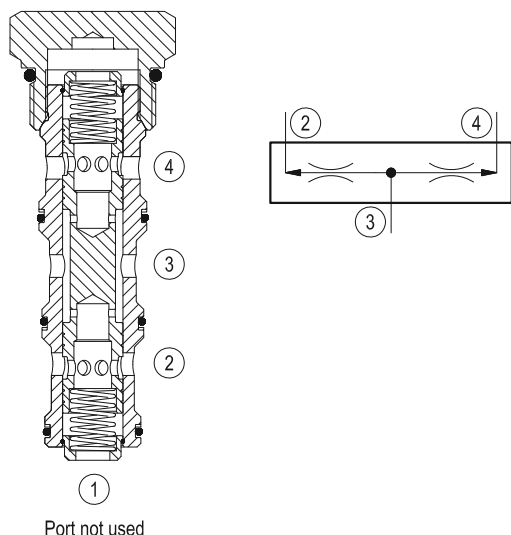
RE 18321-23/03.11 1/2  
Replaces: RE 18321-23/11.10

## Flow divider

Common cavity, Size 16

DSDN-16A

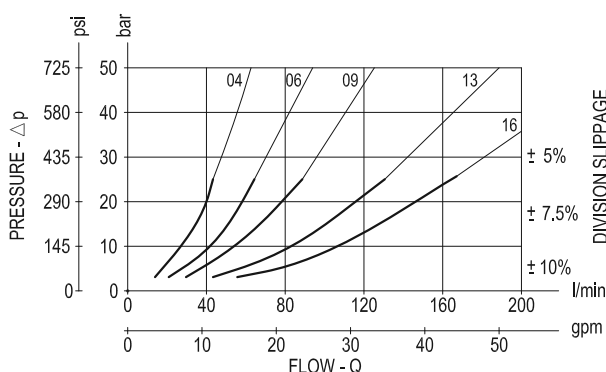
04.05.03.00.27 - Z



### Description

Input flow at 3 will be divided and output equally to 2 and 4 independent of system pressures. Should either 2 or 4 become blocked in flow division mode, approximately 5% of the input flow will be transmitted to the open port. Flow combining is not permitted.

### Performance



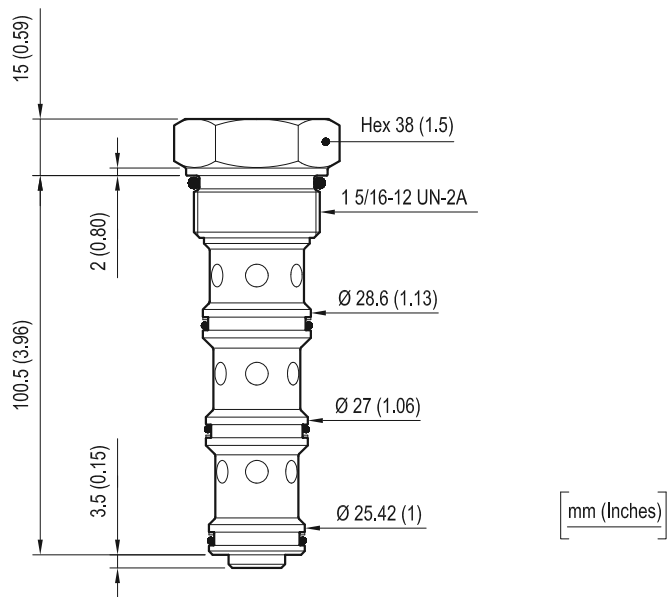
### Technical data

Pressure min-max	bar (psi)	10-350 (145-5000)
Flow range	l/min. (gpm)	See "Range of total flow" table
Fluid temperature range	°C (°F)	-30 to 100 (-22 to 212)
Installation torque	Nm (ft-lbs)	108-122 (80-90)
Division ratio		50% - 50%
Weight	kg (lbs)	0.41 (0.9)
Cavity		CA-16A-4N see data sheet RE 18325-70
Seal kit (*)	code material no.	RG16A4010530100 R930000973
Fluids		Mineral-based or synthetics with lubricating properties at viscosities of 10 to 500 mm <sup>2</sup> /s (cSt)
Filtration		Nominal value max. 10µm (NAS 8) ISO 4406 19/17/14
Installation		No restrictions
Other Technical Data		See data sheet RE 18350-50

(\*) Only external seals for 10 valves

Slippage (tolerance) from theoretical divided flows: ±5% to ±10%, depending from inlet flow (see diagram).  
N.B. Slippage is lowest toward upper limit of nominal range.

Dimensions



Ordering code

04.05.03.00	27	Z	00	*
-------------	----	---	----	---

Flow divider

Common cavity, Size 16

Series 0/A to L  
unchanged performances and dimensions

Version and options standard

	Range of total flow l/min. (gpm)
= 04	15-44 (3.96-11.63)
= 06	22-66 (5.81-17.44)
= 09	30-88 (7.93-23.25)
= 13	44-132 (11.63-34.88)
= 16	55-165 (14.53-43.59)

Type	Material number
040503002704000	R901109851
040503002706000	R901109852
040503002709000	R901109853
040503002713000	R901109857
040503002716000	R901109858

Type	Material number